

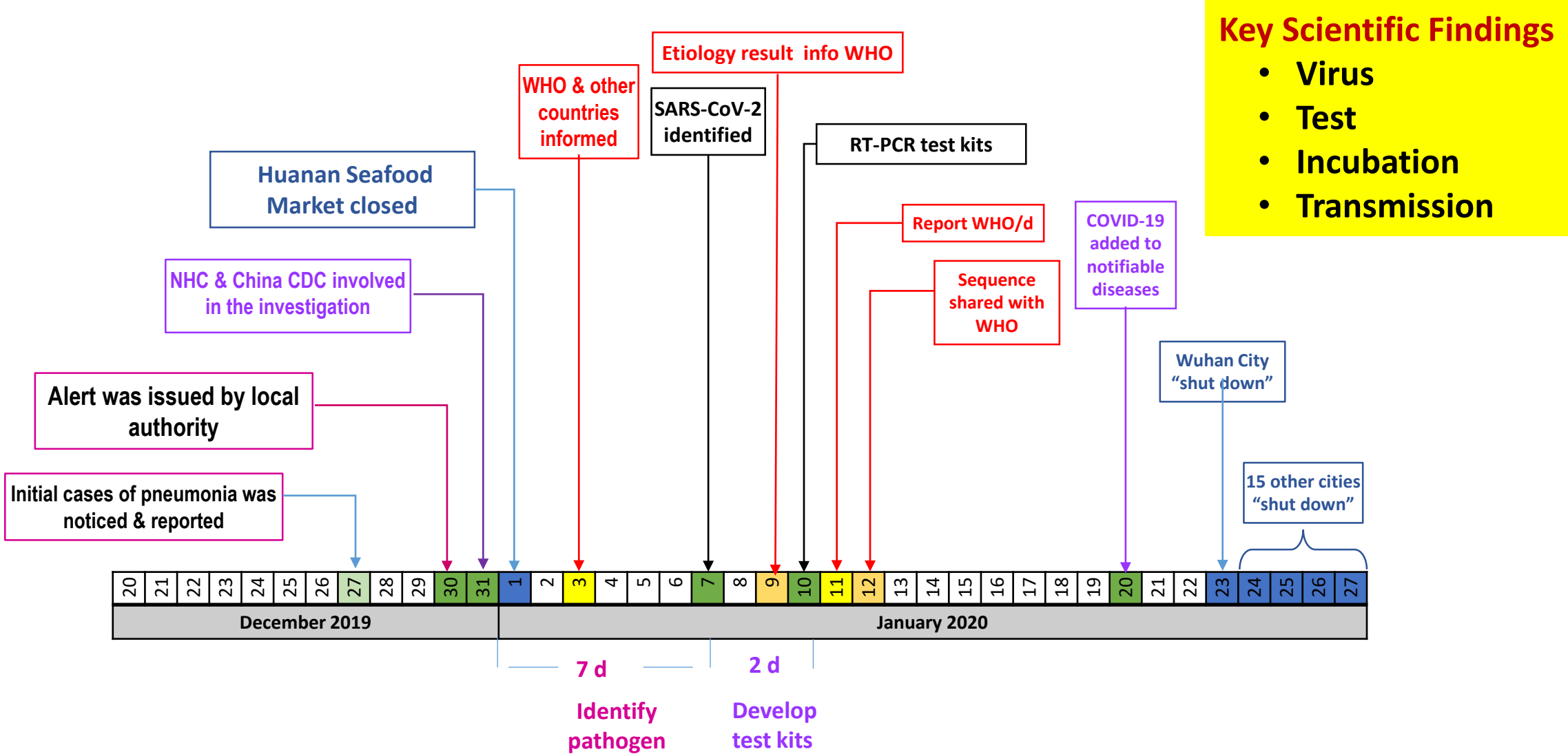
# **China's Response to COVID-19**

**Zunyou Wu**

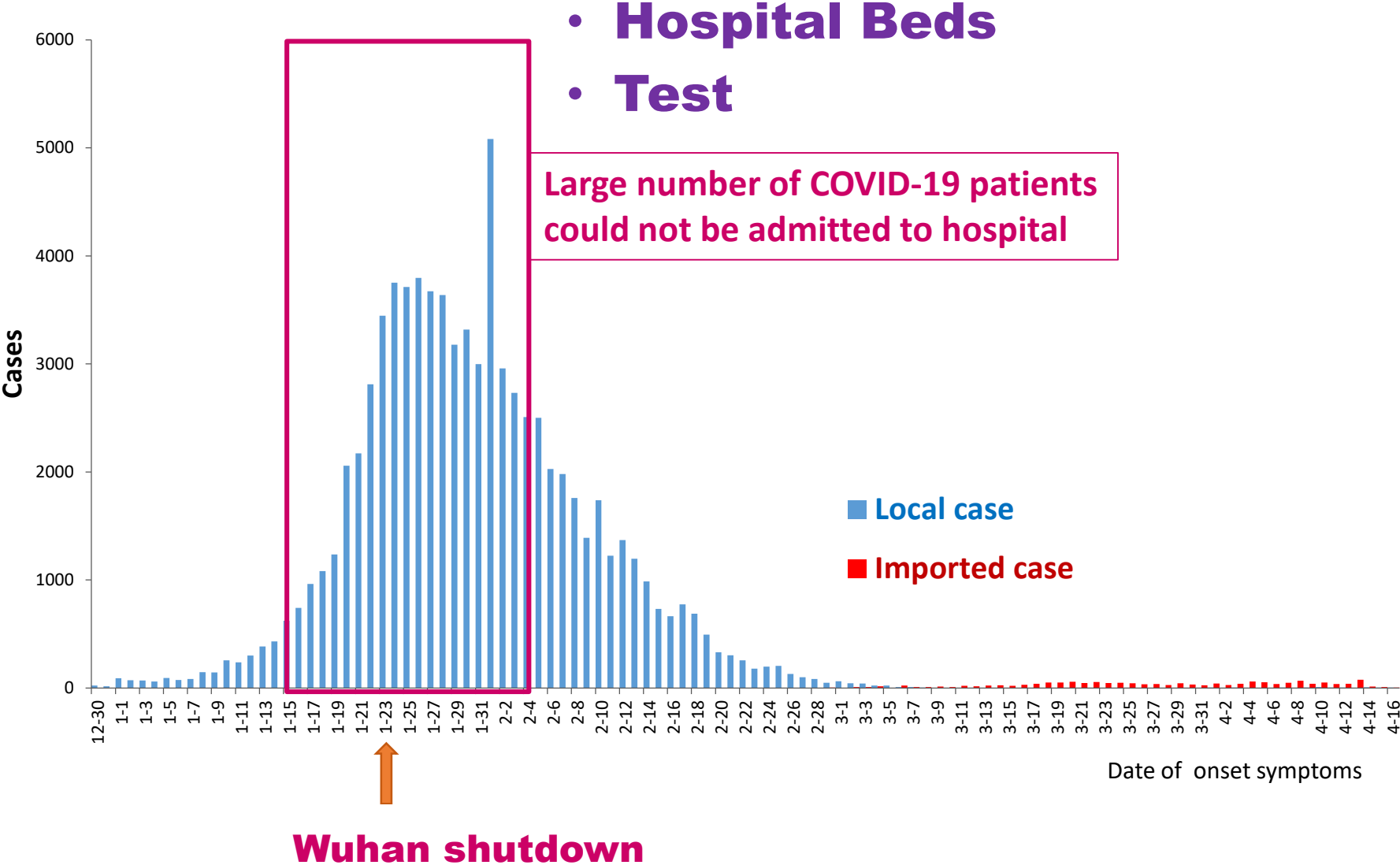
**Chief Epidemiologist China CDC**

**2020.07.02**

# Early Events



# Bottlenecks in the early outbreak



## **China uses fundamental public health measures...**

- **Universal population measures**
- **Case isolation & management**
- **Close contact quarantine**
- **Suspension of public gatherings**
- **Movement restrictions**

# Differentiation of Levels of Care & Isolation

Category	Facilities
Close contact	Home/Hotel → HOTEL
Suspected case	General hospital (individual ward)
Mild/Moderate	Fangcang Shelter Hospital
Severe	General hospital (w/ Inf. Dis ward)
Critical	Designated hospital

Mild/moderate cases accounted for 80% of total diagnosed cases

# Fangcang Shelter Hospitals

## FIVE functions

- 1. Isolation
- 2. Triage
- 3. Basic Supportive Medical Care
- 4. Daily Monitoring & Rapid Referral
- 5. Essential Living Accommodation & Social Engagement



# Activities in Shelter Hospitals

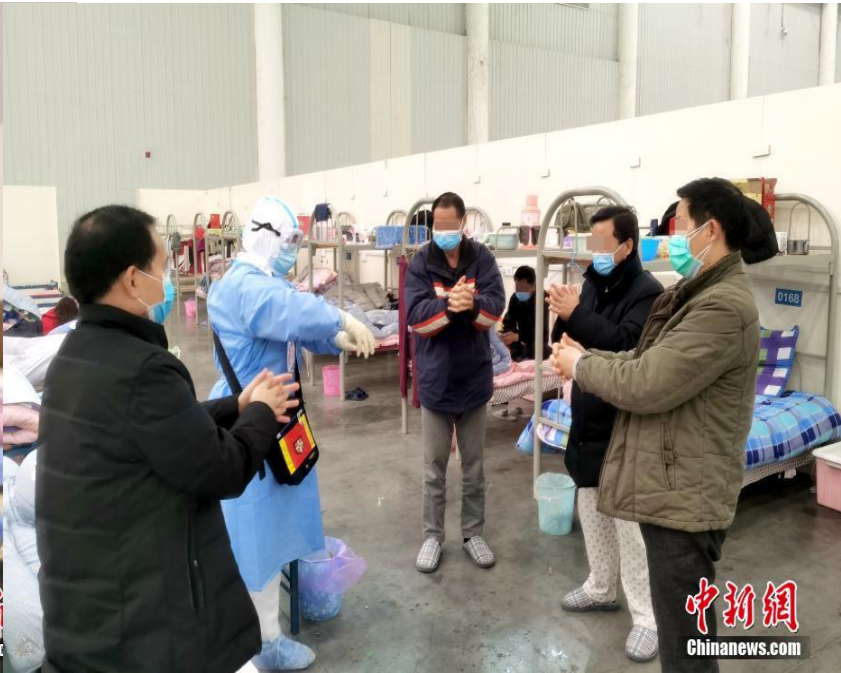
Taking Oxygen



Daily Monitoring



Training on Hand Washing





# Advantages vs Disadvantages of Fangcang Shelter Hospitals

## Advantages:

- **Rapid construction: 2-3 days**
- **Massive scale: Bed capacity in thousands**
- **Low cost: Low ratio of health workers to patients**

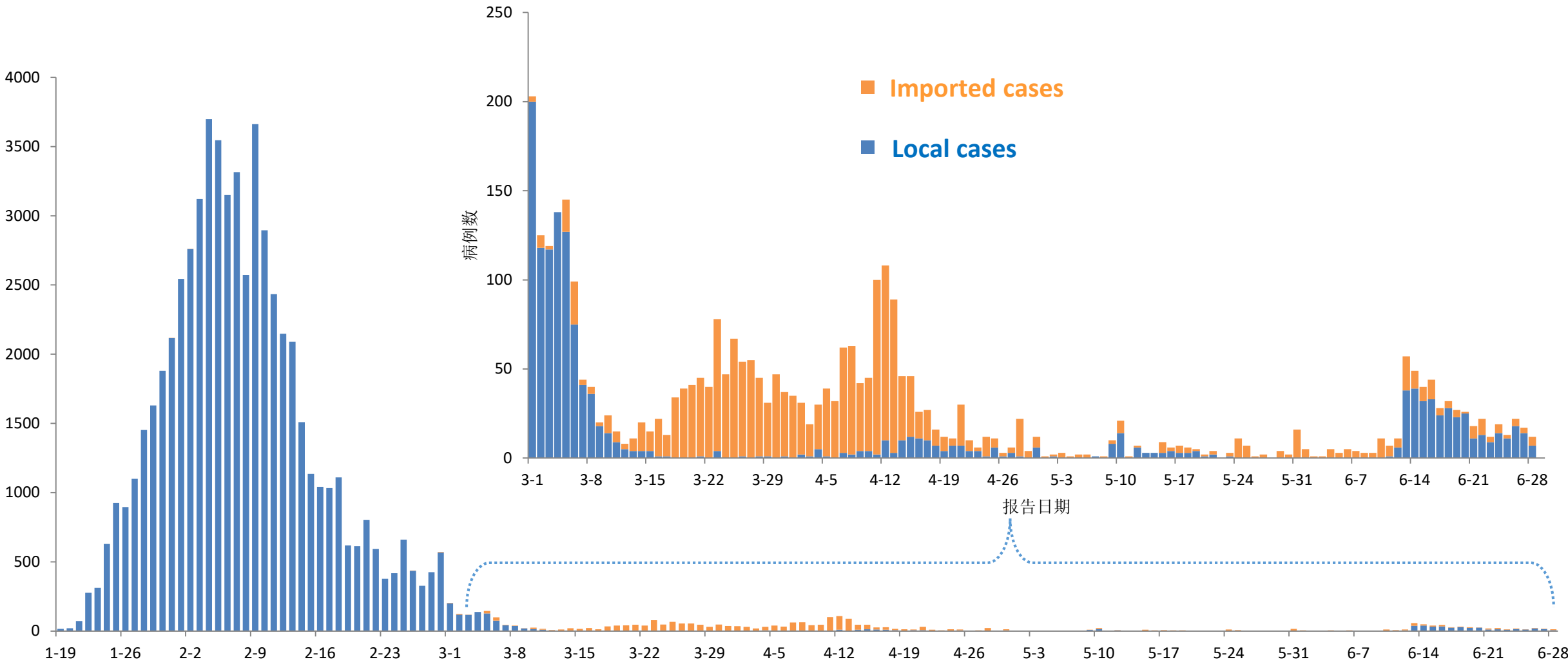
## Disadvantages:

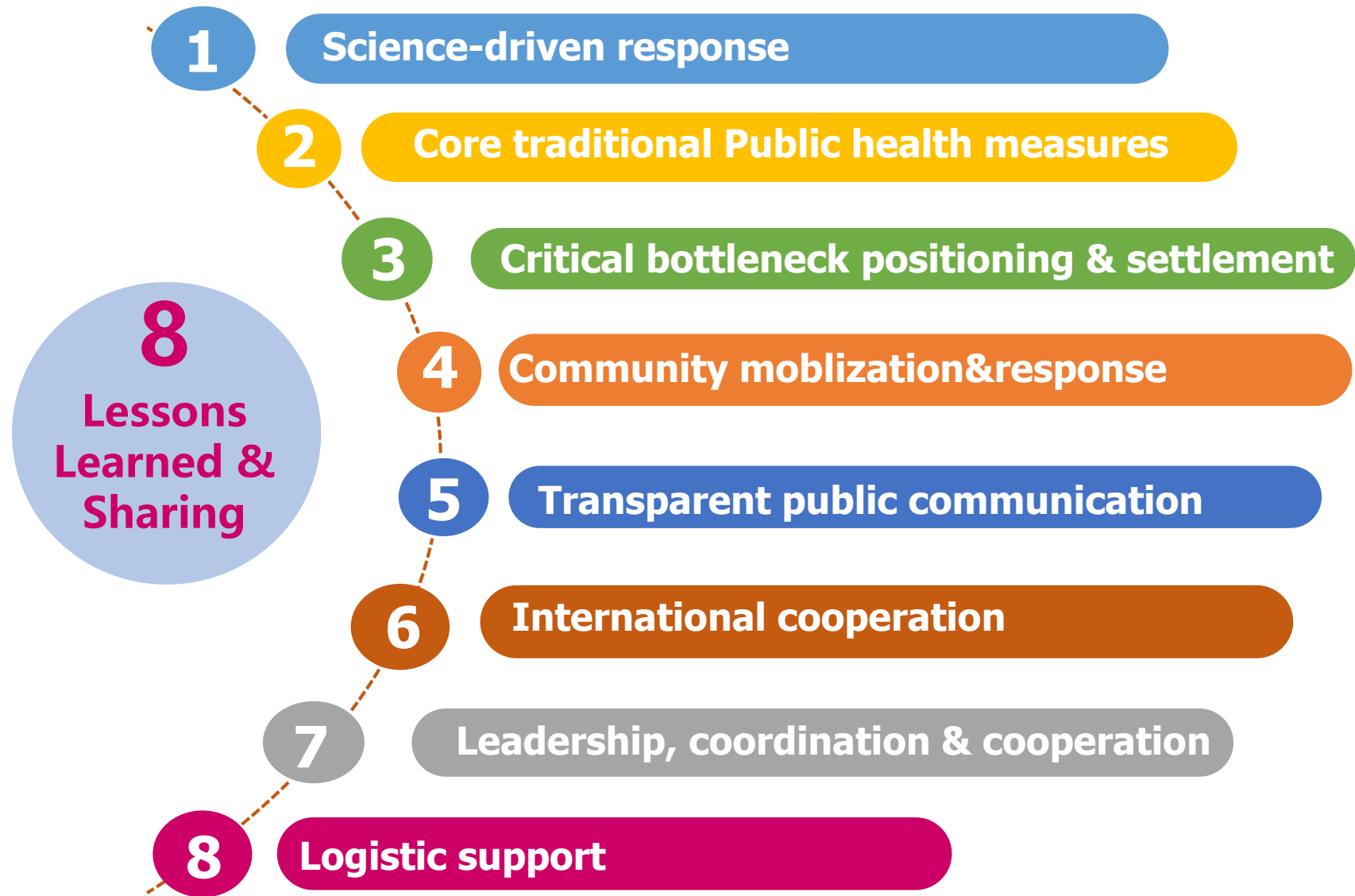
- **Privacy**
- **Not easy to meet individual demands**



# Update Epidemic of COVID-19 in China (Jun 28,2020)

➤ Confirmed **83512**, Suspected **10**, PCR(+): **6707**; Death: **4,634** ; CFR: **5.5%**





# Key Experiences



**FOUR**  
Defense  
Lines

- 1<sup>st</sup> Line-Wuhan + Hubei
- 2<sup>nd</sup> Line-Beijing
- 3<sup>rd</sup> Line-Hubei's surrounding regions
- 4<sup>th</sup> Line-nationwide

**FOUR**  
Earlies

- Early Detection
- Early Reporting
- Early Isolation
- Early Treatment

**For the  
People,  
By the  
People**

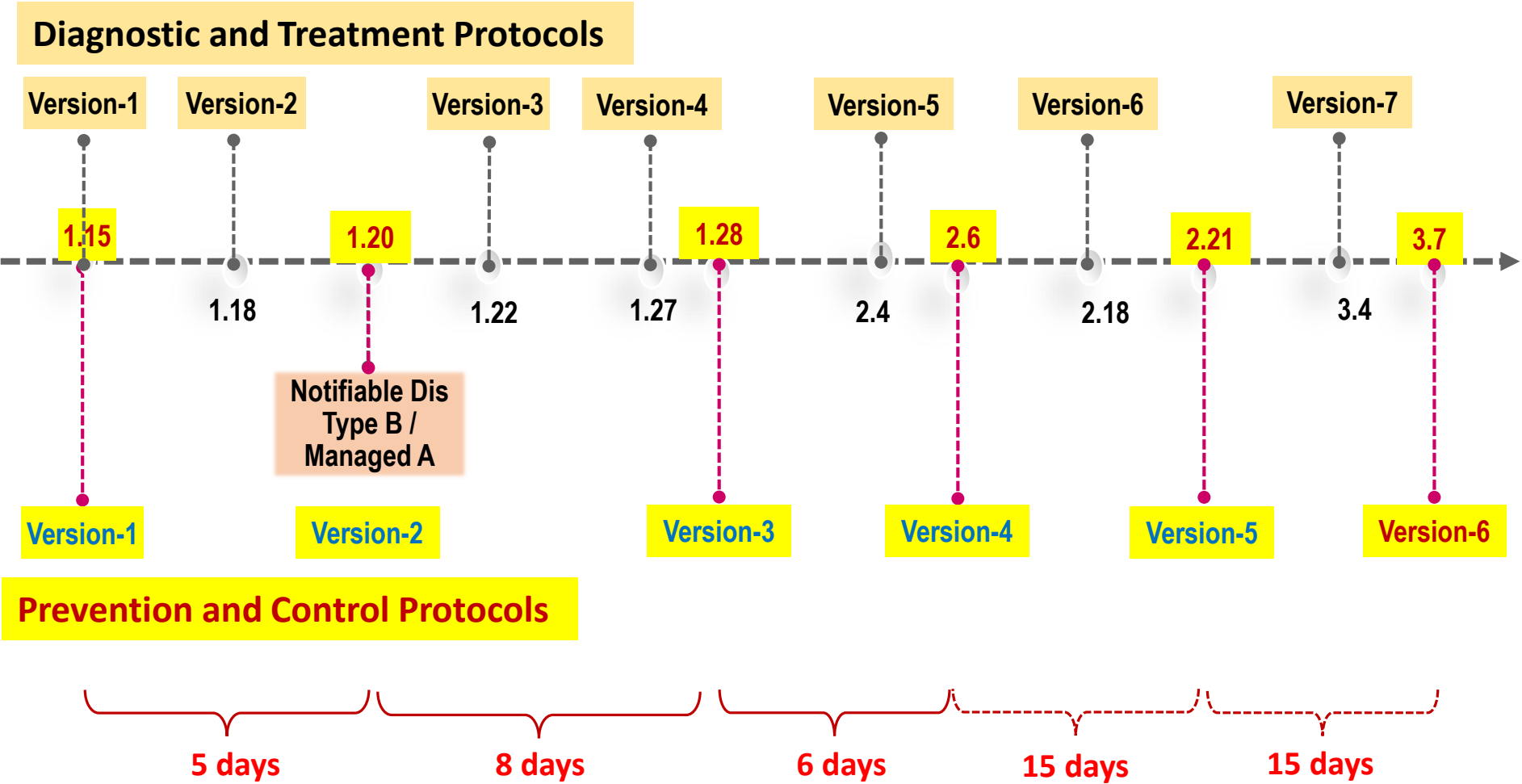
- Community engagement
- Community health education
- Communities hygiene & Disinfection

**C**oordination  
**C**ooperation  
**C**ommunication

- Resources allocation (HCW, PPE, etc)
- Logistic support
- Public understanding & Infodemic response

# Development & Revisions of Technical Guidelines

*Science-driven timely adjustment*



# Control Strategies for Imported Cases

- **No-gap Chain** from border to community to home
- **Entry Screening**
  - 14-day history and health status reporting
  - Temperature screening
  - **Categorization**: Confirmed, Suspected(e.g. with fever), Close contacts
  - Medical examination for suspected symptoms
  - Transfer
    - ✓ Confirmed/Suspected to designated hospitals
    - ✓ Close contacts to designated hotels for quarantine
- **Quarantine policy for travelers**
  - 2 weeks' quarantine in the designated hotels
  - Regardless of domestic or foreigners

**Thanks**